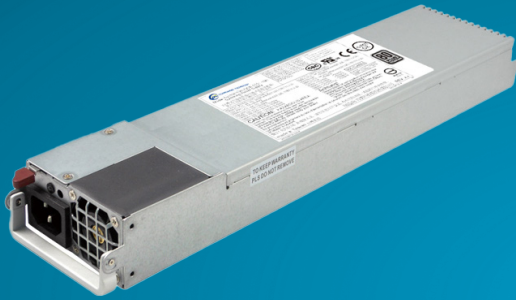


CDR-2221-1M1

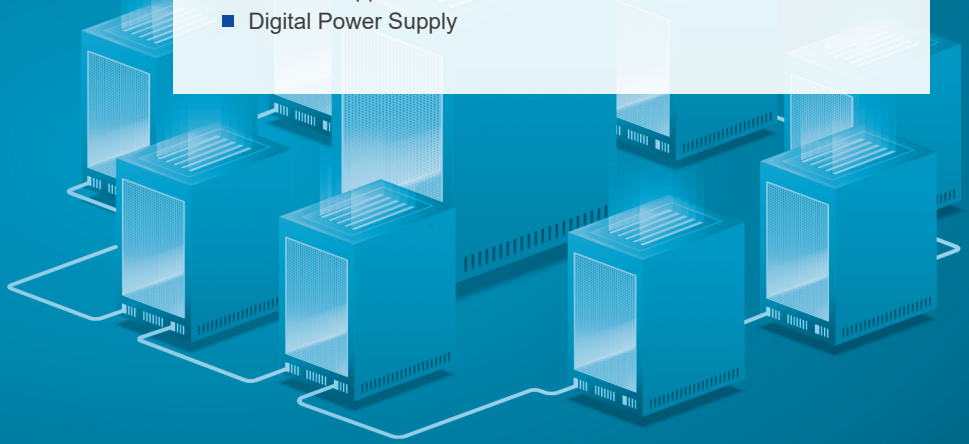
2200W Other Power Supply AC/DC Dual-input Redundant

FEATURES

- High Efficiency: 96%
- Hot Swappable
- PMBus Support
- Digital Power Supply
- Smart Fan Speed Control
- Active Power Factor Correction



■ Dimension : 346 x 76 x 40 mm (D x W x H)



SPECIFICATIONS

▶ INPUT

Voltage	AC input: 90 - 264Vac DC input: 180 - 300Vdc
Frequency	47 - 63Hz
Current	AC 100 - 127V / 14-11A AC 200 - 240V / 10-9.5A DC 230 - 240V / 10-9.8A

▶ EFFICIENCY, PFC, THD

Load (%)	Input 115Vac			Input 230Vac		
	Input current THD	Power Factor	Efficiency	Input current THD	Power Factor	Efficiency
10%	15%	0.9	86%	18%	0.9	90%
20%	10%	0.95	91%	10%	0.95	94%
50%	8%	0.98	93%	5%	0.95	96%
100%	5%	0.99	90%	5%	0.98	91%

▶ OUTPUT

Parameter	12V	5Vsb
Max Load	183.3 A	6A
Regulation	±5%	±5%
Ripple & Noise	120mVp-p	50mVp-p

▶ PROTECTION, RELIABILITY, WARRANTY

Over Current Protection (OCP)
Over Power Protection (OPP)
Over Voltage Protection (OVP)
Over Temperature Protection (OTP)
Short Circuit Protection (SCP)
PFC Over Voltage Protection (Bulk OVP)
Holdup Time: 11ms @ 75% Load
MTBF: >200,000 hours @ 25 °C
Warranty: 3 Years

▶ ENVIRONMENTAL

Temperature	Operating : 0 to 50°C Non-operating : -10 to 60°C
Altitude	Operating : to 16,500 feet (5,000 meters) Non-operating : to 35,000 feet (10,580 meters)
Relative humidity	Operating : 20% to 90% RH, Non-condensing Storage : 5% to 95% RH, Non-condensing

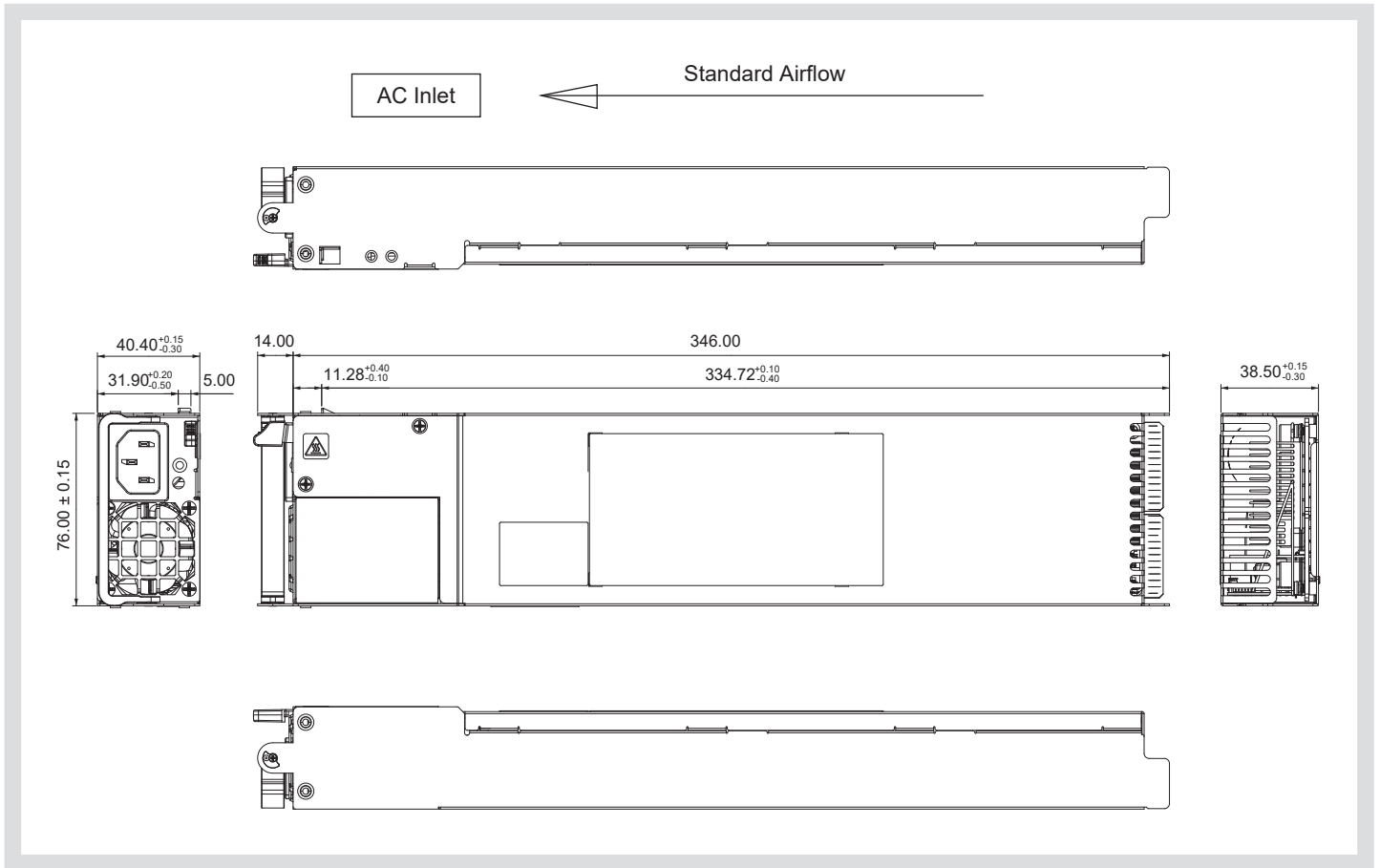
SAFETY AND COMPLIANCE

UL, cUL, CE, CQC, CB, FCC class A, CISPR Class A, RoHS

CDR-2221-1M1



MECHANICAL DRAWING



CONNECTORS

AC Inlet	DC Output	DC Output Mating
IEC 320 C-14, 15A / 250Vac	Gold Finger (27 pair connector)	Equivalent parts: Amphenol GPCP442628110HR

OUTPUT CONNECTOR PIN ASSIGNMENTS

Bottom						Top					
PIN#	Signal Name	PIN#	Signal Name	PIN#	Signal Name	PIN#	Signal Name	PIN#	Signal Name	PIN#	Signal Name
P28	DC Return	A38	5Vsb CO	A48	DC Return	P1	+12V	P11	SMBAlert	P21	+12V
P29	DC Return	A39	DC Return	A49	DC Return	P2	+12V	P12	DC GOOD	P22	+12V
P30	DC Return	A40	DC Return	A50	DC Return	P3	+12V	P13	+12V	P23	+12V
P31	DC Return	A41	DC Return	A51	DC Return	P4	+12V	P14	+12V	P24	+12V
A32	RS GND	A42	DC Return	A52	DC Return	P5	Ishare	P15	+12V	P25	+12V
A33	Reserved	A43	DC Return	A53	DC Return	P6	A1 (address)	P16	+12V	P26	+12V
A34	12V RS GND	A44	DC Return	A54	DC Return	P7	A2 (address)	P17	+12V	P26	+12V
A35	Wake Up Bus	A45	DC Return			P8	I2C SCL	P18	+12V	P27	+12V
A36	DC Return	A46	DC Return			P9	I2C SDA	P19	+12V		
A37	5Vsb CO	A47	DC Return			P10	PS ON/OFF	P20	+12V		

* Product details and image are for reference and final product is subject to change without notice.



Compuware Technology Inc.

Tel: 886-2-8226-3936 Address: 5F., No. 232, Liancheng Rd., Zhonghe Dist., New Taipei City 235, Taiwan (R.O.C.)



www.compuware-us.com