

# CDR-6511-1M1

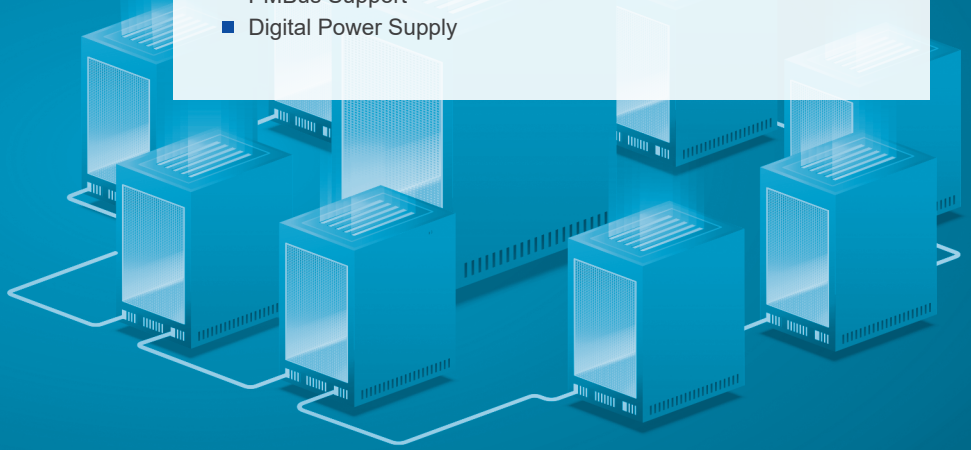
**650W** Power Supply  
AC/DC Dual-input Redundant

## FEATURES

- High Efficiency: 94%
- Hot Swappable
- PMBus Support
- Digital Power Supply
- Smart Fan Speed Control
- Active Power Factor Correction



■ Dimension : 346 x 76 x 40 mm (D x W x H)



## SPECIFICATIONS

### ▶ INPUT

Voltage	AC input: 90 - 264Vac DC input: 180 - 300Vdc
Frequency	47 - 63Hz
Current	AC 100 - 127V / 7-5.5A AC 200 - 240V / 4-3A DC 200 - 240V / 4-3A

### ▶ EFFICIENCY, PFC, THD

Load (%)	Input 115Vac			Input 230Vac		
	Input current THD	Power Factor	Efficiency	Input current THD	Power Factor	Efficiency
10%	23%	0.8	80%	25%	0.8	82%
20%	14%	0.94	88%	15%	0.9	90%
50%	11%	0.98	92%	12%	0.96	94%
100%	8%	0.99	89%	10%	0.98	91%

### ▶ OUTPUT

Parameter	12V main (100-140VAC)	12V main (200-240VAC) and (180-300VDC)	5Vsb
Rated Continuous	50A	54A	4A
CLST 20s Peak 2	Rated + 6A	Rated + 6A	6A
Pmax.app Peak 15msec Peak 3, 4	Rated + 30A	Rated + 30A	-
Pmax Peak 100µs Peak 5	-	Rated +45A	-
Regulation	±5%	±5%	±5%
Ripple & Noise	120mVp-p	120mVp-p	50mVp-p

### ▶ PROTECTION, RELIABILITY, WARRANTY

Over Current Protection (OCP)  
Over Power Protection (OPP)  
Over Voltage Protection (OVP)  
Over Temperature Protection (OTP)  
Short Circuit Protection (SCP)  
Holdup Time: 12ms @ 75% Load  
MTBF: >200,000 hours at 25 °C  
Warranty: 3 Years

### ▶ ENVIRONMENTAL

Temperature	Operating : 0 to 50°C Non-operating : -10 to 70°C
Altitude	Operating : to 3,023 m Non-operating : to 10,580 m
Relative humidity	Operating : 5% to 90% RH, Non-condensing Storage : 5% to 95% RH, Non-condensing

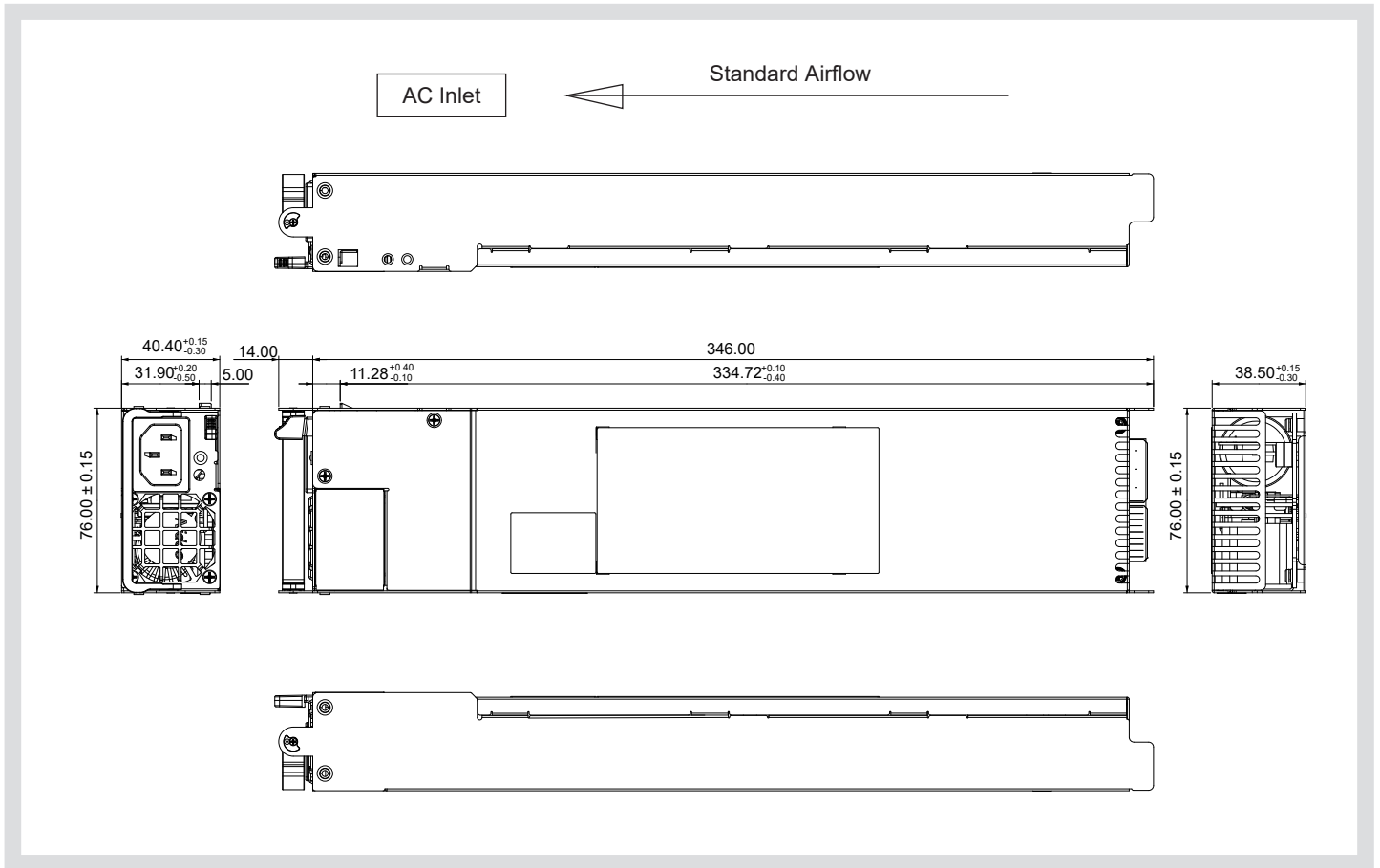
## SAFETY AND COMPLIANCE

UL, cUL, CE, CCC, BSMI, CB, FCC class A, CISPR Class A, RoHS

# CDR-6511-1M1



## MECHANICAL DRAWING



### CONNECTORS

AC Inlet	DC Output	DC Output Mating
IEC 320 C-14, 15A / 250Vac	Gold Finger (19 pair connector)	Tyco P/N 1489958-1 or FCI P/N 10034908 connector or equivalent parts

### OUTPUT CONNECTOR PIN ASSIGNMENTS

Bottom				Top			
PIN#	Signal Name	PIN#	Signal Name	PIN#	Signal Name	PIN#	Signal Name
P20	RS GND	P30	DC Return	P1	Ishare	P11	+12V
P21	Spare	P31	DC Return	P2	A1 (address)	P12	+12V
P22	12V RS GND	P32	DC Return	P3	A2 (address)	P13	+12V
P23	Wakeup_Bus	P33	DC Return	P4	I2C SCL	P14	+12V
P24	DC Return	P34	DC Return	P5	I2C SDA	P15	+12V
P25	5Vsb CO	P35	DC Return	P6	PS ON/OFF	P16	+12V
P26	5Vsb CO	P36	DC Return	P7	SMBAlert	P17	+12V
P27	DC Return	P37	DC Return	P8	DC GOOD	P18	+12V
P28	DC Return	P38	DC Return	P9	+12V	P19	+12V
P29	DC Return			P10	+12V		

\* Product details and image are for reference and final product is subject to change without notice.



**Compuware Technology Inc.**

Tel: 886-2-8226-3936 Address: 5F., No. 232, Liancheng Rd., Zhonghe Dist., New Taipei City 235, Taiwan (R.O.C.)



[www.compuware-us.com](http://www.compuware-us.com)