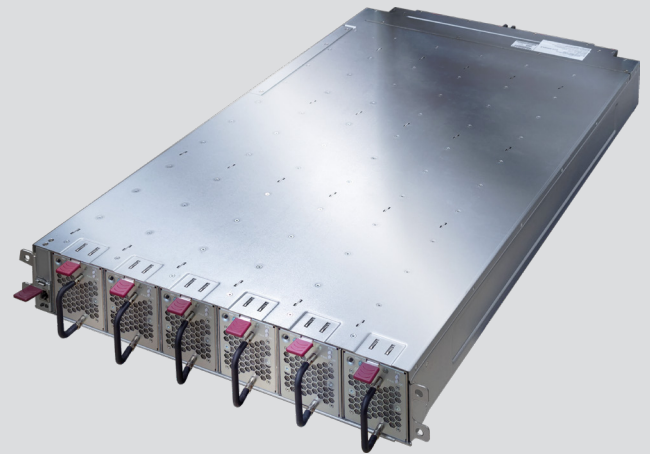


EIA 19" 33kW BBU Shelf

CBR-3332-1S1



For NVIDIA Architecture

KEY FEATURES

Provide an efficient backup solution for power peaks and utility outages

- 33kW rated backup power @90 sec
- 6 x 5.5kW BBU modules:
 - ❶ 5+1 redundancy/ hot swappable
 - ❷ Peak load support:
 - ≤136% (based on 5.5KW), ≤50ms moving average,
 - ≤160% (based on 5.5KW), ≤400us moving average,
 - ≤100% (based on 5.5KW), ≥1s moving average.

*Within regulation and fulfill the 5.5KW 90s discharge duration.
- Instant backup on AC loss ≤2 ms transition
- AC-Loss synchronization with PSU shelves
- Multiple shelf support (Shelf to Shelf)
 - BBU Shelf ↔ BBU Shelf
 - BBU Shelf ↔ Power Shelf
- Integrated monitoring (PMC) & MODBUS/CANBUS support

INPUT

Voltage	50Vdc
Input Current	42A(Max)

OUTPUT

Output Voltage	50Vdc
Output Current	678A Max (6+0)

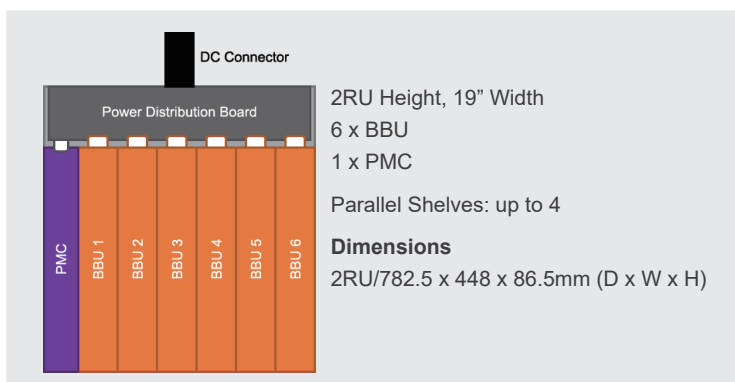
BACK-UP TIME

BBU (6+0)	33kW (6+0) → 90s 27.5kW (5+0) → 90s
Efficiency	Charger: > 95% Discharger: Up to 97%

ENVIRONMENTAL

Temperature	Operating: 0°C to 40°C
Altitude	Operating: 0 to 3,000m (10,000 feet)
Relative Humidity	Operating and Storage: 10% to 90% RH, non-condensing

BASIC SPECIFICATIONS

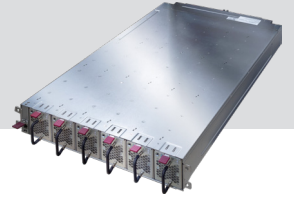


SAFETY AND COMPLIANCE

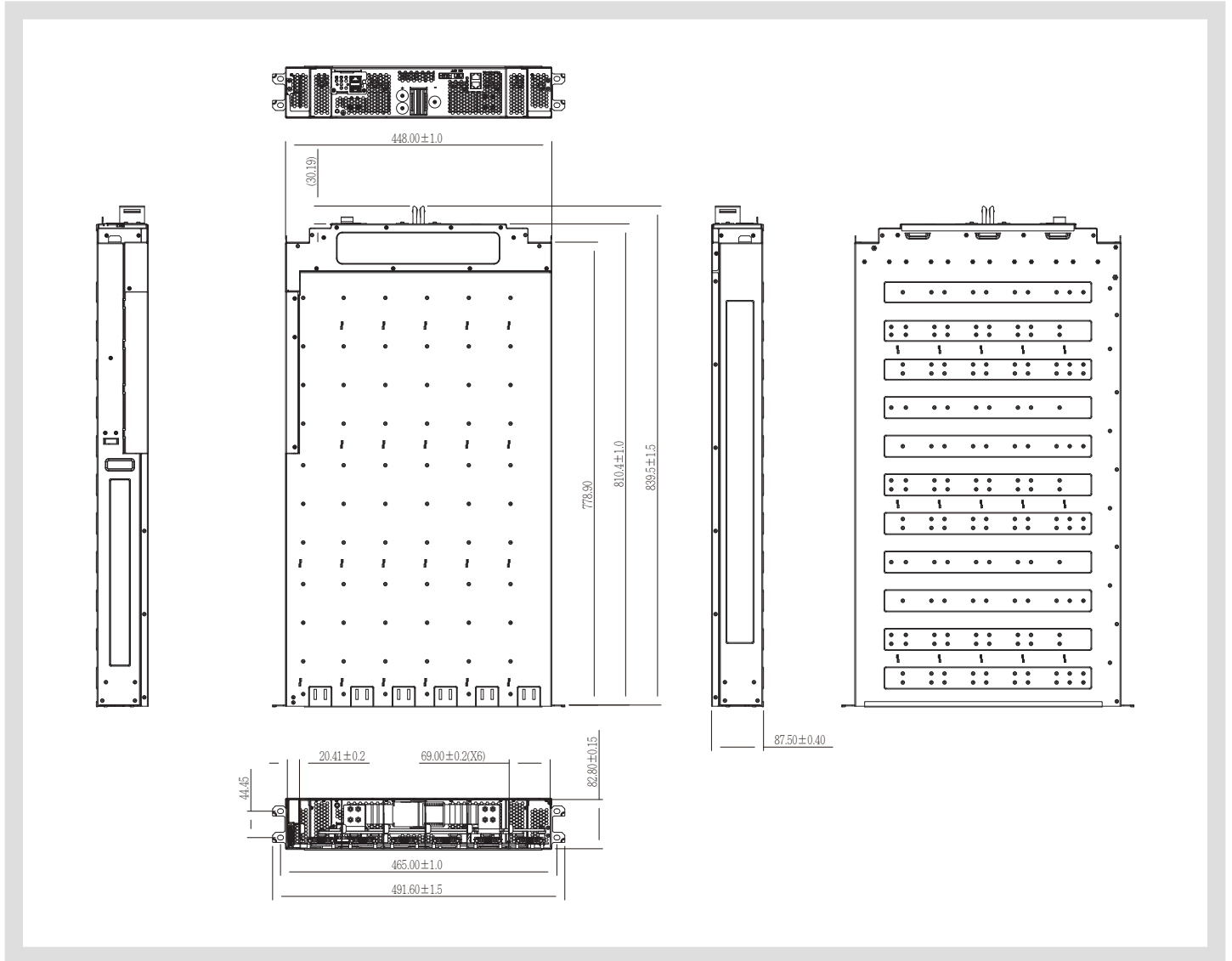
UL, CE, CB



CBR-3332-1S1



MECHANICAL DRAWING



CONNECTORS

Input / Output Connector

Busbar Clip



Compuware Technology Inc.

Tel: 886-2-8226-3936 Address: 5F., No. 232, Liancheng Rd., Zhonghe Dist., New Taipei City 235, Taiwan (R.O.C.)



www.compuware-us.com